

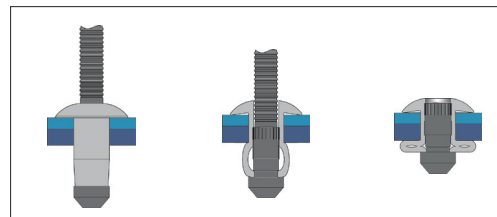
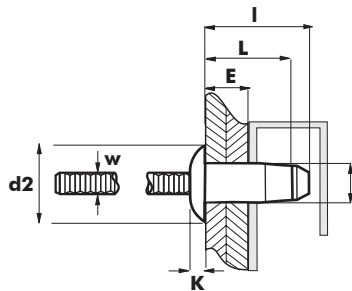
BLIND RIVET HARD LOCK REMACHE HARD LOCK







| English | Español | Français | Deutsch | Portugues |
|--|---------------------------------------|-------------------------------------|-------------------------------------|-------------------------------------|
| Dome head | Cabeza alomada | Tête plate | Flachrundkopf | Cabeça boleada |
| Body: Aluminium * 2,5% Mg | Cuerpo: Aluminio * 2,5% Mg | Corps: Aluminium * 2,5% Mg | Hülse: Aluminium * 2,5% Mg | Corpo: Aluminio * 2,5% Mg |
| Mandrel: Aluminium ** Zn 5,5% Mg Cu | Vástago: Aluminio ** Zn 5,5% Mg Cu | Clou: Aluminium ** Zn 5,5% Mg Cu | Dorn: Aluminium ** Zn 5,5% Mg Cu | Prego: Aluminio ** Zn 5,5% Mg Cu |

* Al Mg 2,5 EN AW 5052

** Al Zn 5,5 Mg Cu EN AW 7075



Test according to / Ensayos realizados según EN ISO 14589

| d1 Ø m/m | L Nominal m/m |  E m/m |  | d2 Ø m/m | K m/m | W m/m | I m/m |  (N) |  (N) | Part No/Ref. |
|----------------|---------------------|--|--|----------------|----------|----------|----------|---|--|--------------|
| 6,4 | 10,5 | 2,8 - 4,8 | 6,70 - 6,90 | 13,10 | 2,60 | 4,20 | 15,0 | 5000 | 2800 | G1881006410 |
| | 12,5 | 4,8 - 6,8 | | | | | 17,0 | 5200 | 2800 | G1881006412 |
| | 14,5 | 6,8 - 8,8 | | | | | 19,0 | 5400 | 2800 | G1881006414 |
| | 16,5 | 8,8 - 10,8 | | | | | 21,0 | 5400 | 2800 | G1881006416 |
| | 18,5 | 10,8 - 12,8 | | | | | 23,0 | 5400 | 2800 | G1881006418 |

Queda prohibida la reproducción total o parcial de este documento. Los datos que aparecen en este catálogo son valores típicos y están sujetos a modificaciones como consecuencia de la mejora continua de los productos. Consúltenos si necesita información actualizada.

The total or partial reproduction of this document is prohibited. The figures showed in this catalogue are typical values and they could be changed as a result of the continuous improvement of products. Please, do not hesitate to contact us if you need an updated information.

© 2015 BRALO, S.A.

www.bralo.com



05/2015